

	Cage Code:	<b>PRODUCT DATA</b> <b>(subject to change)</b>	Date:	Rev:	Model no:
	02WLO		11/19/2009	None	M20-085

**This document describes the performance of a high power 1P2T-TR switch. This is a COLD switched designed to switch when RF is off. Proper bias levels per item no. 11 must be applied when operating this device.**

ITEM NO	CHARACTERISTIC	CONDITIONS	MIN	MAX	UNITS	COMMENTS
1	POWER SPECIFICATION	IN BAND				
1.1	FREQUENCY		25	100	MHz	
1.2	PEAK POWER			15	WATTS	
1.3	PULSE WIDTH		--	CW	uS	
1.4	DUTY		--	100	%	
1.6	CW POWER		--	15	WATTS	
2	POWER SPECIFICATIONS	GUARD BAND				
2.1	FREQUENCY		100	175	MHz	
2.2	PEAK POWER		--	2	WATTS	
2.3	PULSE WIDTH		--	CW	μS	
2.4	DUTY		--	CW	%	
2.5	AVERAGE POWER		--	2	WATTS	
2.6	CW POWER		--	2	WATTS	
3	POWER SPECIFICATIONS	OUT OF BAND				
3.1	FREQUENCY			>175	MHz	
3.2	PEAK POWER		--	0.03	WATTS	
3.3	PULSE WIDTH		CW	--	μS	
3.4	DUTY		CW	--	%	
3.5	AVERAGE POWER		--	--	WATTS	
3.6	CW POWER		--	0.03	WATTS	
4	OPERATING FREQUENCY		25	100	MHz	
5	INSERTION LOSS	XMT		0.7	dB	
		RCV		0.8	dB	
6	ISOLATION	XMT	20		dB	
6.1	ISOLATION	RCV	60		dB	
7	PHASE					
7.1	MATCHING					NOT SPECIFIED
7.2	PHASE TRACKING					NOT SPECIFIED



Cage Code:  
**02WLO**

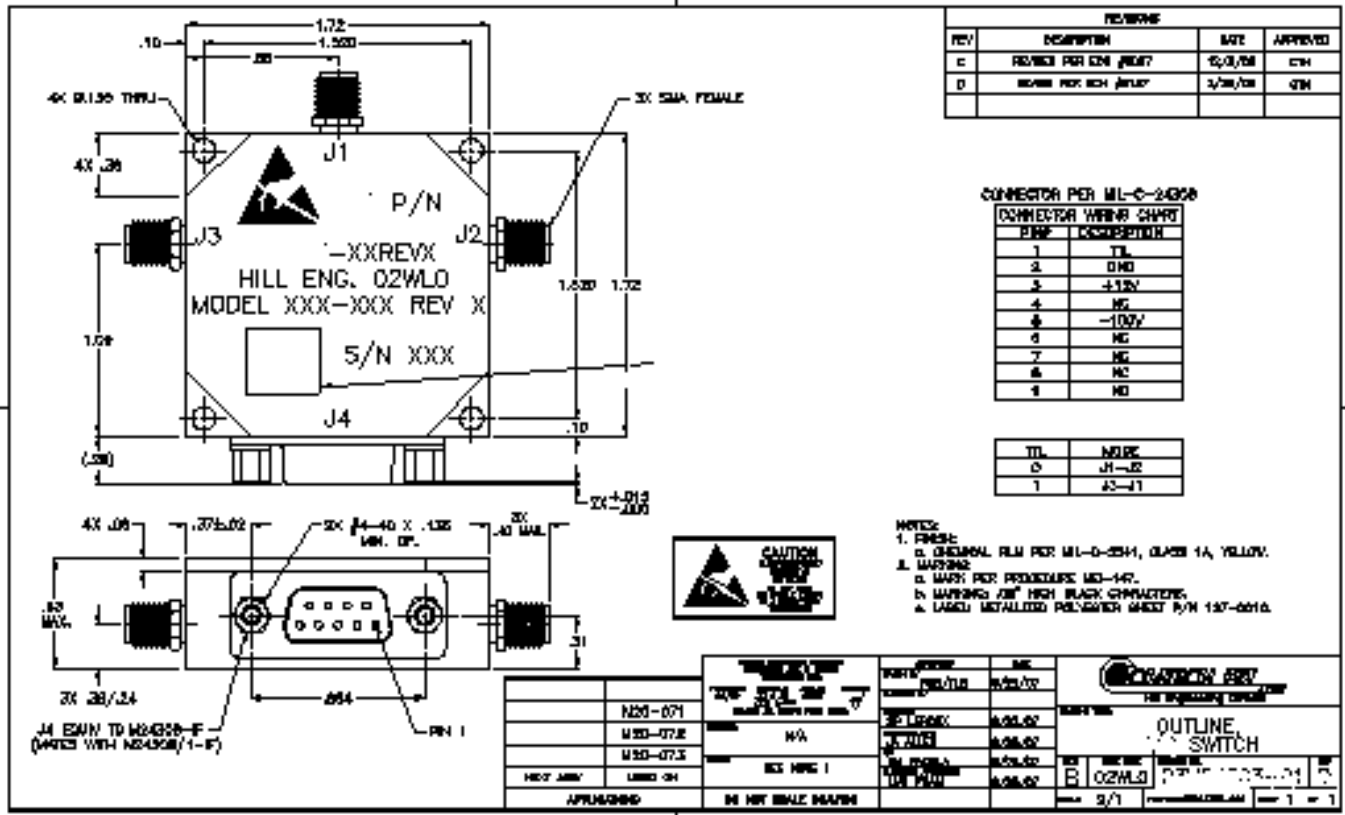
**PRODUCT DATA**  
**(subject to change)**

Date:  
11/19/2009

Rev:  
None

Model no:  
**M20-085**

ITEM NO	CHARACTERISTIC	CONDITIONS	MIN	MAX	UNITS	COMMENTS
8	VSWR					
8.1	INPUT	SELECTED PORTS	--	1.5:1	--	
8.2	OUTPUT	SELECTED PORTS	--	1.5:1	--	
8.3	PORT NOT SELECTED		--	2:1	--	Up to 100 milliwatts incident power
8.4	TERMINATION		--	3:1	--	Any phase angle, full rated power. Infinite load tolerated for 10 sec. max.
8.5	SOURCE		--	1.2:1	--	
9	HARMONICS & SPURS					
9.1	INTERNALLY GENERATED					NOT SPECIFIED
10	SWITCHING					
10.1	SPEED	90/10 – 10/90	--	10	uS	
10.2	SWITCHING RATE		--	10	KHz	
10.3	COMMAND LOGIC	TTL				
10.4	LOGIC TABLE					SEE OUTLINE DWG below
10.5	POSITION SENSE					NOT AVAILABLE
10.6	VIDEO LEAKAGE			10	Vpp	Into 1K Ohm load
11	D.C. POWER					
11.1	POSITIVE BIAS VOLTAGE		11.5	12.5	VDC	
11.2	NEGATIVE BIAS VOLTAGE		-95	-105	VDC	
11.3	POSTIVE BIAS CURRENT			150	mA	
11.4	NEGATIVE BIAS CURRENT			20	mA	
12	CONNECTORS					
12.1	RF					SMA
12.2	DC					9 pin D type
13	MECHANICAL					
13.1	WEIGHT		--	2.5	OZ	
13.2	OUTLINE					SEE DWG below
14	ENVIRONMENTAL					
14.1	OPERATING TEMPERATURE		-20	+60	°C	
14.2	STORAGE TEMPERATURE		-55	+85	°C	
14.3	VIBRATION LEVEL					Ground mobile
14.4	DEVICE SCREENING	LEVEL 2				QP-121



Note: The above drawing is representational only, to show general outline and connector placement. Request a new one upon ordering this switch.