



Cage Code: 02WLO	Title: PRODUCT DATA (Subject to change)	Date: 09/25/01	Rev: N/A	Model no: H23-203
----------------------------	---	--------------------------	--------------------	-----------------------------

This document describes the performance of a high power 1P2T switch. This is a cold switched design i.e.; switched while RF is off. Proper bias levels must be applied when operating this device.

ITEM NO	CHARACTERISTIC	CONDITIONS	MIN	MAX	UNITS	COMMENTS
1	POWER SPECIFICATION	IN BAND				
1.1	FREQUENCY		4	8	GHz	
1.2	PEAK POWER			2000	WATTS	
1.3	PULSE WIDTH			10	μs	
1.4	DUTY			4	%	
1.5	AVG. POWER			80	WATTS	
1.6	CW POWER			80	WATTS	
2	POWER SPECIFICATIONS	GUARD BAND				
2.1	FREQUENCY		8	8.5	GHz	
2.2	PEAK POWER			20	WATTS	
2.3	PULSE WIDTH			0.5	μs	
2.4	DUTY			5	%	
2.5	CW POWER			1	WATT	
3	POWER SPECIFICATIONS	OUT OF BAND				
3.1	FREQUENCY		>8.5		GHz	
3.2	PEAK POWER			0.03	WATTS	
3.3	PULSE WIDTH		CW		μs	
3.4	DUTY		CW		%	
3.5	CW POWER			0.03	WATTS	
4	OPERATING FREQUENCY		4	8	GHz	
5	INSERTION LOSS					
5.1				1.3	dB	
6	ISOLATION					
6.1	INPUT TO OUTPUT		40		dB	
6.2	OUTPUT TO OUTPUT		40		dB	
7	PHASE					
7.1	MATCHING					NOT SPECIFIED
7.2	TRACKING					NOT SPECIFIED
8	VSWR					
8.1	PORTS NOT SELECTED					INFINITE



Cage Code: 02WLO

Title: **PRODUCT DATA**
(Subject to change)

Date: 09/25/01

Rev: N/A

Model no: H23-203

ITEM NO	CHARACTERISTIC	CONDITIONS	MIN	MAX	UNITS	COMMENTS
8	VSWR (CONT.)					
8.2	INPUT & OUTPUT, SELECTED PORTS			1.8:1		
8.3	TERMINATION			2.0:1		
8.4	SOURCE			1.2:1		
9	HARMONICS & SPURS					
9.1	INTERNALLY GENERATED					NOT SPECIFIED
9.2	MEASURED AT INCIDENT POWER			0	WATTS	
10	SWITCHING					
10.1	SPEED	50% Logic To 0.5dB		1.5	µs	
10.2	SWITCHING RATE			50	kHz	
10.3	COMMAND LOGIC	RS-422				
10.4	VIDEO LEAKAGE					NOT SPECIFIED
10.5	LOGIC TABLE					SEE DWG 3414
11	D.C. POWER					
11.1	POSITIVE BIAS VOLTAGE		4.8	5.2	VDC	
11.2	NEGATIVE BIAS VOLTAGE		-48	-54	VDC	
11.4	POSITIVE BIAS CURRENT			300	mA	
11.5	NEGATIVE BIAS CURRENT			40	mA	
NOTE: NO OVER-VOLTAGE OR REVERSE POLARITY PROTECTION IS PROVIDED WITH THIS SWITCH.						
12	CONNECTORS					
12.1	RF					SMAF
12.3	DC					Solder Pins
13	MECHANICAL					
13.1	WEIGHT			6	Oz.	
13.2	OUTLINE					SEE DWG 3414
14	ENVIRONMENTAL					
14.1	OPERATING TEMPERATURE		0	+60	°C	
14.2	STORAGE TEMPERATURE		-20	+85	°C	
14.3	VIBRATION LEVEL					SHELTERED GROUND MOBILE



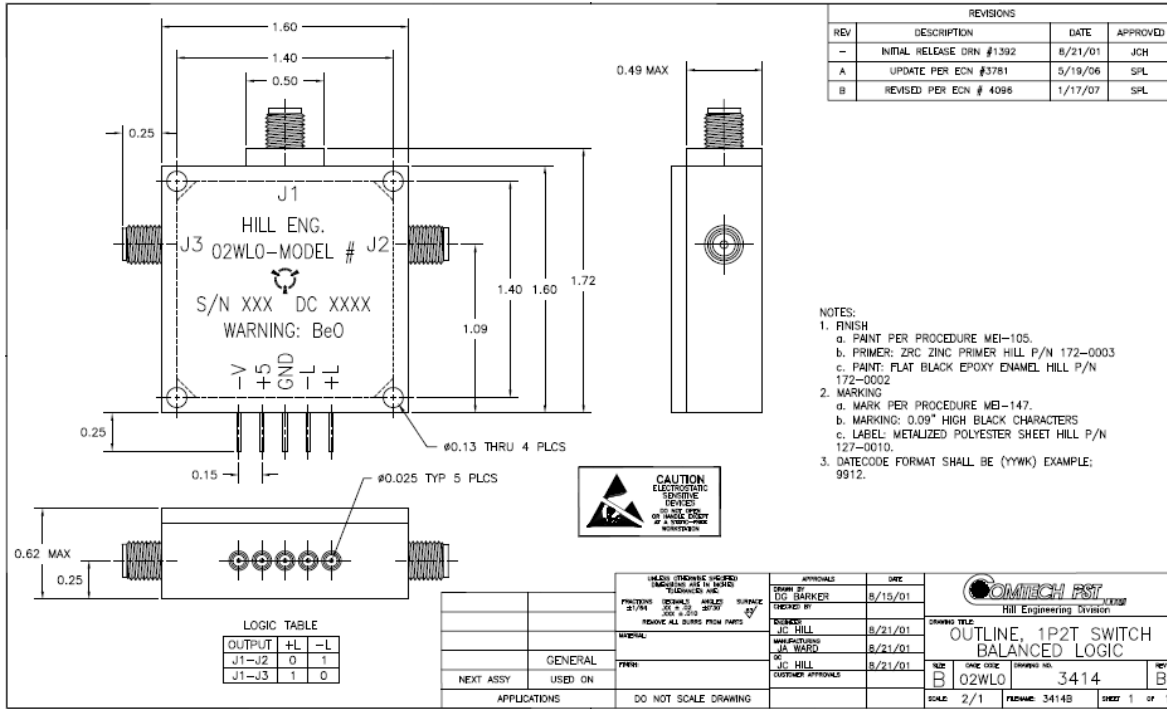
Cage Code: 02WLO

Title: **PRODUCT DATA**
(Subject to change)

Date: 09/25/01

Rev: N/A

Model no: H23-203



REV	DESCRIPTION	DATE	APPROVED
-	INITIAL RELEASE DRN #1392	8/21/01	JCH
A	UPDATE PER ECN #3781	5/19/06	SPL
B	REVISED PER ECN # 4098	1/17/07	SPL

- NOTES:
- FINISH
 - PAINT PER PROCEDURE MEI-105.
 - PRIMER: ZRC ZINC PRIMER HILL P/N 172-0003
 - PAINT: FLAT BLACK EPOXY ENAMEL HILL P/N 172-0002
 - MARKING
 - MARK PER PROCEDURE MB-147.
 - MARKING: 0.09" HIGH BLACK CHARACTERS
 - LABEL: METALIZED POLYESTER SHEET HILL P/N 127-0010.
 - DATECODE FORMAT SHALL BE (YYWK) EXAMPLE: 9912.