



<b>Cage Code:</b> 02WLO	<b>Title:</b> <b>PRODUCT DATA</b> <b>(subject to change)</b>	<b>Date:</b> 2/25/99	<b>Rev:</b> None	<b>Model no:</b> H62-002
----------------------------	--	-------------------------	---------------------	-----------------------------

This document describes the performance of a high power 1P6T switch. This is a cold switched design i. e; switched while RF is off. Proper bias levels per item no.12 must be applied when operating this device. Unselected ports are terminated.

ITEM NO	CHARACTERISTIC	CONDITIONS	MIN	MAX	UNITS	COMMENTS
1	POWER SPECIFICATION	IN BAND				
1.1	FREQUENCY		1030	1090	MHz	
1.2	PEAK POWER			600	WATTS	
1.3	PULSE WIDTH		10		Usec	
1.4	DUTY			1	%	
1.5	CW POWER			6	WATTS	
1.6	PEAK AVERAGE	OFF PORT TERMINATION		5	WATTS	
2	POWER SPECIFICATIONS	GUARD BAND				
2.1	FREQUENCY		2.0	2.5	GHz	
2.2	PEAK POWER			1.5	WATTS	
2.3	PULSE WIDTH			10	USEC	
2.4	DUTY				%	
2.5	CW POWER			0.5	WATT	
3	POWER SPECIFICATIONS	OUT OF BAND				
3.1	FREQUENCY			>2.5	GHz	
3.2	PEAK POWER			0.1	WATTS	
3.3	PULSE WIDTH			10	USEC	
3.4	DUTY				%	
3.5	CW POWER			0.1	WATTS	
4	OPERATING FREQUENCY		1030	1090	MHz	
5	INSERTION LOSS			1.0	DB	
6	ISOLATION					
6.1	ISOLATION	INPUT TO OUTPUT	30		DB	
6.2	ISOLATION	OUTPUT TO OUTPUT	30		DB	



Cage Code:  
02WLO

Title:

**PRODUCT DATA**  
**(subject to change)**

Date:  
2/25/99

Rev:  
None

Model no:  
**H62-002**

ITEM NO	CHARACTERISTIC	CONDITIONS	MIN	MAX	UNITS	COMMENTS
7	PHASE					
7.1	MATCHING					NOT SPECIFIED
7.2	PHASE TRACKING					NOT SPECIFIED
8	VSWR					
8.1	INPUT	SELECTED PORT		1.50:1		
8.2	OUTPUT	SELECTED PORT		1.50:1		
8.3	VSWR	TERMINATION		1.80:1		
8.4	VSWR	SOURCE		1.25:1		
9	HARMONICS & SPURS					
9.1	INTERNALLY GENERATED					NOT SPECIFIED
9.2		MEASURED AT INCIDENT POWER		0	DBM	
10	SWITCHING					
10.1	SPEED	50% TTL TO 90% RF SIGNAL		1	uSEC	
10.2	SWITCHING RATE			100	KHz	
10.3	COMMAND LOGIC	TTL				
10.4	LOGIC TABLE					SEE OUTLINE DWG 2606 below
10.5	VIDEO LEAKAGE					NOT SPECIFIED
11	D.C. POWER					
11.1	POSITIVE BIAS VOLTAGE		4.75	5.25	VDC	
11.2	NEGATIVE BIAS VOLTAGE		-48	-54	VDC	
11.3	POSTIVE BIAS CURRENT			400	MA	
11.4	NEGATIVE BIAS CURRENT			80	MA	
12	CONNECTORS					
12.1	RF					SMA(F)
12.2	DC					DAM-15P
13	MECHANICAL					
13.1	WEIGHT			16	OZ	
13.2	OUTLINE					SEE DWG 2606 below
14	ENVIRONMENTAL					
14.1	OPERATING TEMPERATURE		-20	+60	°C	
14.2	STORAGE TEMPERATURE		-20	+60	°C	
14.3	VIBRATION LEVEL					GND TRANSPORT
14.2	ALTITUDE			10000	FT	



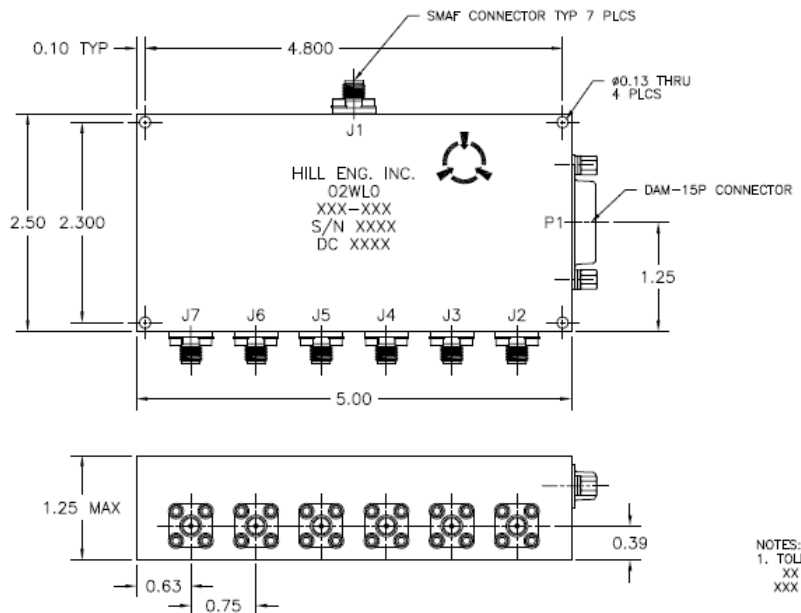
Cage Code:  
**02WLO**

Title:  
**PRODUCT DATA**  
**(subject to change)**

Date:  
**2/25/99**

Rev:  
**None**

Model no:  
**H62-002**



REVISIONS			
REV	DESCRIPTION	DATE	APPROVED
-	INITIAL RELEASE ECN #376	12/4/97	SPL
A	REVISED PER ECN #381	12/5/97	J HILL
B	REVISED PER ECN #386	12/12/97	J HILL
C	REVISED PER ECN #402	2/23/98	SPL

P1 CONNECTIONS			
PIN	SIGNAL	PIN	SIGNAL
1	+5VDC	9	GND
2	-5VDC	10	N/C
3	N/C	11	N/C
4	LOGIC 1	12	GND
5	LOGIC 2	13	LOGIC 3
6	GND	14	LOGIC 4
7	LOGIC 5	15	GND
8	LOGIC 6		

PORT	LOGIC COUNTER					
	1	2	3	4	5	6
J2	0	1	1	1	1	1
J3	1	0	1	1	1	1
J4	1	1	0	1	1	1
J5	1	1	1	0	1	1
J6	1	1	1	1	0	1
J7	1	1	1	1	1	0

NOTES:  
1. TOLERANCES:  
XX ±.02  
XXX ±.01

SPECIFICATIONS SUBJECT TO CHANGE WITHOUT NOTICE

UNLESS OTHERWISE SPECIFIED DIMENSIONS ARE IN INCHES TOLERANCES ARE				APPROVALS		DATE	COMTECH PST Hill Engineering Division	
FRACTIONS	DECIMALS	ANGLES	SURFACE	DRAWN BY D.G. BARKER	12/4/97	DRAWING TITLE <b>OUTLINE, SP6T SWITCH</b>		
21/64	.001	30/32	AS SHOWN	CHECKED BY J. HILL	12/4/97			
MATERIAL				DESIGNED BY S. LEROUX	12/4/97	SIZE DATE CODE DRAWING NO. REV B 02WLO 2606 C		
FINISH				MANUFACTURED BY J. WARD	12/4/97			
NEXT ASSY USED ON				DATE APPROVED J. HILL	12/4/97	SCALE: 1/1 DRAWING: 2606C SHEET 1 OF 1		
APPLICATIONS				DO NOT SCALE DRAWING				