



Cage Code: 02WLO	Title: PRODUCT DATA (subject to change)	Date: 3/23/01	Rev: None	Model no: M22-026
----------------------------	---	-------------------------	---------------------	-----------------------------

This document describes the performance of a high power 1P2T switch. This is a cold switched design i. e; switched while RF is off. Proper bias levels per item no. 11 must be applied when operating this device.

ITEM NO	CHARACTERISTIC	CONDITIONS	MIN	MAX	UNITS	COMMENTS
1	POWER SPECIFICATION	IN BAND				
1.1	FREQUENCY		225	400	MHz	
1.2	PEAK POWER	225 to 400 MHz		120	Watts	
1.3	PULSE WIDTH	225 to 400 MHz	-	10	uS	
1.4	DUTY	225 to 400 MHz		42	%	
1.5	CW POWER	292 to 318 MHz		180	Watts	
2	POWER SPECIFICATIONS	GUARD BAND				
2.1	FREQUENCY		400	600	MHz	
2.2	PEAK POWER			10	Watts	
2.3	PULSE WIDTH			10	uS	
2.4	DUTY			25	%	
2.5	AVERAGE POWER			2.5	Watts	
3	POWER SPECIFICATIONS	OUT OF BAND				
3.1	FREQUENCY		>600		MHz	
3.2	PEAK POWER			0.10	Watt	
3.3	PULSE WIDTH			CW		
3.4	DUTY			100	%	
3.5	AVERAGE			0.10	Watts	
4	OPERATING FREQUENCY		225	400	MHz	
5	INSERTION LOSS					
	J1 TO J2	LOGIC 0		.35	dB	
	J1 TO J3	LOGIC 1		.35	dB	
6	ISOLATION					
6.1	J1 TO J2	LOGIC 1	45		dB	
6.2	J1 TO J3	LOGIC 0	45		dB	
7	PHASE					
7.1	MATCHING					NOT SPECIFIED
7.2	PHASE TRACKING					NOT SPECIFIED



Cage Code:
02WLO

Title:
PRODUCT DATA
(subject to change)

Date:
3/23/01

Rev:
None

Model no:
M22-026

ITEM NO	CHARACTERISTIC	CONDITIONS	MIN	MAX	UNITS	COMMENTS
8	VSWR					
8.1	INPUT			1.3:1		
8.2	OUTPUT			1.3:1		
8.3	TERMINATION			2.0:1		
8.4	PORTS NOT SELECTED			∞		INFINITY
8.5	SOURCE			1.4:1		
9	HARMONICS & SPURS					NOT SPECIFIED
10	SWITCHING					
10.1	SWITCHING SPEED	TO 0.5 dB OF I.L.		10	μS	
10.2	SWITCHING RATE			1.0	KHz	
10.3	VIDEO LEAKAGE, 50 OHMS			2.0	Vpp	
10.4	COMMAND LOGIC TYPE:	TTL				
10.5	LOGIC TABLE					SEE OUTLINE DWG 3336 below
11	D.C. POWER					
11.1	POSITIVE BIAS VOLTAGE		4.8	5.5	VDC	
11.2	NEGATIVE BIAS VOLTAGE		-68	-72	VDC	
11.3	POSITIVE BIAS CURRENT			200	mA	
11.4	NEGATIVE BIAS CURRENT			40	mA	
11.5	VOLTAGE PROTECTION					THIS UNIT DOES NOT HAVE OVERVOLTAGE OR REVERSE POLARITY PROTECTION ON ANY BIAS PORT
12	CONNECTORS					
12.1	RF					SMAF, REMOVABLE
12.2	DC					SOLDER PINS
13	MECHANICAL					
13.1	WEIGHT			4	oz.	
13.2	OUTLINE				inches	SEE DWG 3336 below
14	ENVIRONMENTAL	WEATHERPROOF				
14.1	OPERATING TEMPERATURE		0	+67	°C	
14.2	STORAGE TEMPERATURE		-20	+85	°C	
14.3	VIBRATION LEVEL					Ground Transport
14.4	DEVICE SCREENING	LEVEL 2				QP-121 LEVEL 2

Federal Cage Code 02WLO



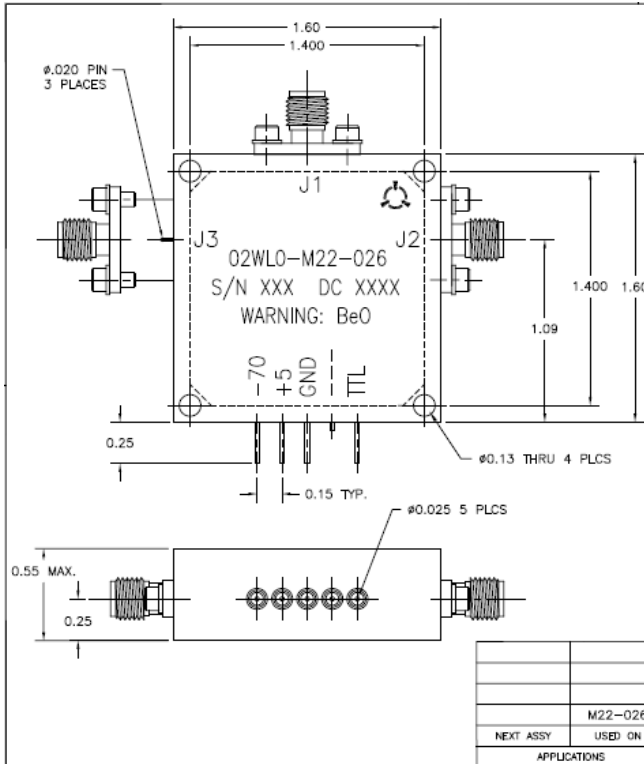
Cage Code: 02WLO

Title: PRODUCT DATA
(subject to change)

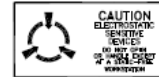
Date: 3/23/01

Rev: None

Model no: M22-026



REVISIONS			
REV	DESCRIPTION	DATE	APPROVED
-	INITIAL RELEASE DRN #1230	3/23/01	JCH



- NOTES:
- FINISH
 - PAINT PER PROCEDURE MEI-105.
 - PRIMER: ZRC ZINC PRIMER HILL ENGINEERING P/N 172-0003
 - PAINT: FLAT BLACK EPOXY ENAMEL HILL ENGINEERING P/N 172-0002
 - MARKING
 - MARK PER PROCEDURE MEI-147.
 - MARKING: 0.09" HIGH BLACK CHARACTERS
 - LABEL: METALIZED POLYESTER SHEET P/N 127-0010.
 - DATECODE FORMAT SHALL BE (YYWK) EXAMPLE; 9912.

UNLESS OTHERWISE SPECIFIED DIMENSIONS ARE IN INCHES FINISHES: 21/84 22 23 24 25 26 27/28 29 30 31 32 33 34 35 36 37/38 39 40 41 42 43 44 45 46 47 48 49 50 51 52 53 54 55 56 57 58 59 60 61 62 63 64 65 66 67 68 69 70 71 72 73 74 75 76 77 78 79 80 81 82 83 84 85 86 87 88 89 90 91 92 93 94 95 96 97 98 99 100 REMOVE ALL BURRS FROM PARTS		APPROVALS DRAWN BY: HN Saksken CHECKED BY: JC HILL DATE: 3/23/01	
MATERIAL: M22-026 NEXT ASSY: USED ON:	DATE: 3/23/01 MANUFACTURED BY: JC HILL DATE: 3/23/01 CUSTOMER APPROVALS:	DRAWING TITLE: OUTLINE, 1P2T TTL LOGIC SIZE: B ONE SIDE: 02WLO DRAWING NO.: 3336 REV: - SCALE: 2/1 FEDERAL: 3336- SHEET: 1 of 1	
APPLICATIONS	DO NOT SCALE DRAWING		