
	Cage Code:	Title:	Date:	Rev:	Model no:
	02WL0	<b>PRODUCT DATA</b> <b>(subject to change)</b>	6/28/06	None	<b>M22-107</b>

**This document describes the performance of a high power 1P2T switch. This is a cold-switched design i.e.; switched while RF is off. Bias per section 11 must be applied when operating this device**

ITEM NO	CHARACTERISTIC	CONDITIONS	MIN	MAX	UNITS	COMMENTS
1	POWER SPECIFICATION	IN BAND				
1.1	FREQUENCY		220	1020	MHz	
1.2	PEAK POWER			200	WATTS	
1.3	PULSE WIDTH		50	1000	nS	
1.4	DUTY			15	%	
1.5	AVG POWER			30	WATTS	
1.6	CW POWER			10	WATTS	
2	POWER SPECIFICATIONS	GUARD BAND				
2.1	FREQUENCY		1020	1120	MHz	
2.2	PEAK POWER			10	WATTS	
2.3	PULSE WIDTH		50	1000	nS	
2.4	DUTY			15	%	
2.5	CW POWER			10	WATTS	
3	POWER SPECIFICATIONS	OUT OF BAND				
3.1	FREQUENCY		>1120		MHz	
3.2	PEAK POWER			30	dBm	
3.3	PULSE WIDTH			CW	μS	
3.4	DUTY			CW	%	
3.5	CW POWER			30	dBm	
4	OPERATING FREQUENCY		240	1000	MHz	
5	INSERTION LOSS			0.9	dB	
6	ISOLATION					
6.1			40		dB	
7	PHASE					
7.1	MATCHING					NOT SPECIFIED
7.2	TRACKING					NOT SPECIFIED
8	VSWR					
8.1	PORT SELECTED			1.6:1		
8.2	PORT NOT SELECTED			2.0:1		

	Cage Code:	Title:	Date:	Rev:	Model no:
	02WLO	<b>PRODUCT DATA</b> <b>(subject to change)</b>	6/28/06	None	<b>M22-107</b>

ITEM NO	CHARACTERISTIC	CONDITIONS	MIN	MAX	UNITS	COMMENTS
8.2.1	OFF TERMINATION POWER	PEAK POWER AVERAGE POWER		20 5	WATTS	
8.3	LOAD			2.0:1		
8.4	SOURCE			2.0:1		
9	HARMONICS & SPURS					
9.1	INTERNALLY GENERATED		40		dBc	
10	SWITCHING					
10.1	SPEED	50% LOGIC to 10/90% RF		150	nS	
10.2	SWITCHING RATE			150	KHz	
10.3	VIDEO LEAKAGE			5	Vpp	Across 50 Ohms
10.4	COMMAND LOGIC	RS-422				120 Ohm balanced logic
10.5	LOGIC TABLE					SEE DWG 3414
11	D.C. POWER					
11.1	POSITIVE BIAS VOLTAGE 1		4.80	5.20	VDC	
11.2	NEGATIVE BIAS VOLTAGE		-26	-32.0	VDC	
11.3	POSITIVE BIAS CURRENT 1			300	mA	
11.4	NEGATIVE BIAS CURRENT			100	mA	
11.5	NOTE : Voltage Protection – This unit does not have over-voltage or reverse polarity protection on any bias port.					
12	CONNECTORS					
12.1	RF	INPUT & XMIT				SMAF
12.3	DC					Solder Pins
13	MECHANICAL					
13.1	WEIGHT			4	Oz	
13.2	OUTLINE					See Dwg 3414
14	ENVIRONMENTAL					
14.1	OPERATING TEMPERATURE		0	+50	°C	
14.2	STORAGE TEMPERATURE		-20	+55	°C	
14.3	VIBRATION LEVEL					GROUND TRANSPORT



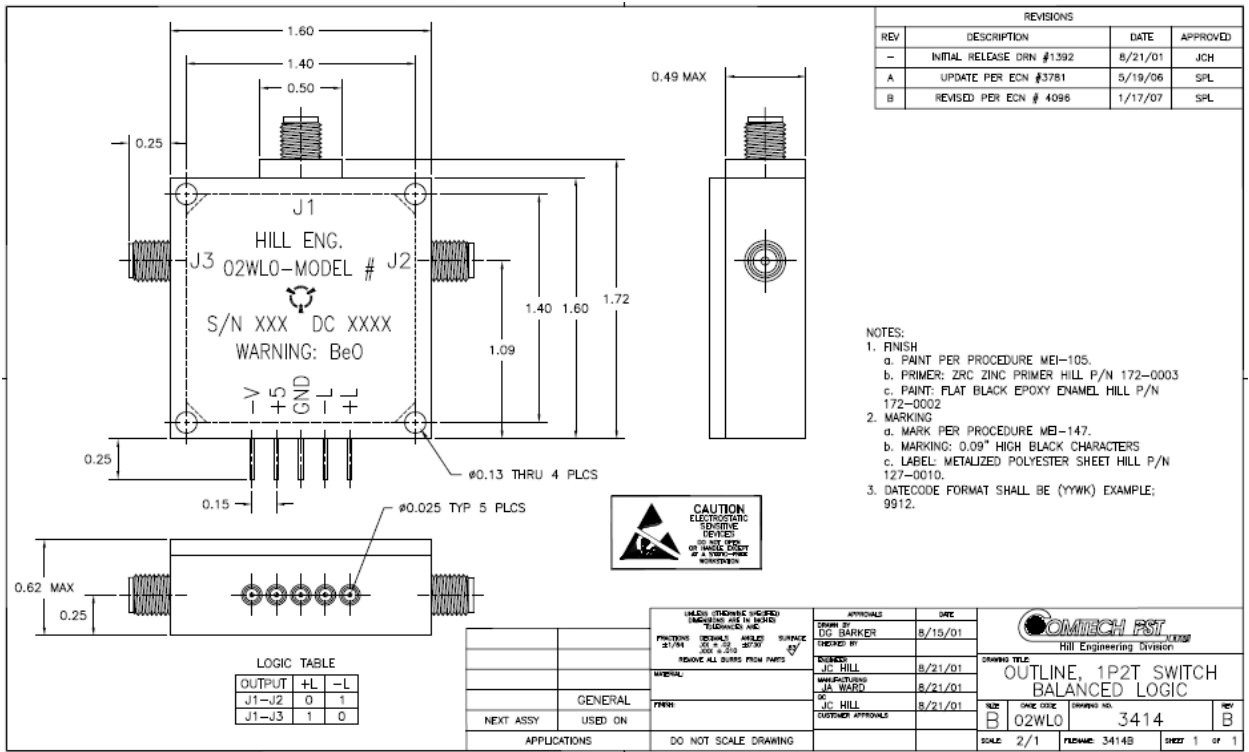
Cage Code:  
02WL0

Title:  
**PRODUCT DATA**  
**(subject to change)**

Date:  
6/28/06

Rev:  
None

Model no:  
**M22-107**



REVISIONS			
REV	DESCRIPTION	DATE	APPROVED
-	INITIAL RELEASE DRN #1392	8/21/01	JCH
A	UPDATE PER ECN #3781	5/19/06	SPL
B	REVISED PER ECN # 4086	1/17/07	SPL

- NOTES:
- FINISH
    - PAINTE PER PROCEDURE MEI-105.
    - PRIMER: ZRC ZINC PRIMER HILL P/N 172-0003
    - PAINT: FLAT BLACK EPOXY ENAMEL HILL P/N 172-0002
  - MARKING
    - MARK PER PROCEDURE MEI-147.
    - MARKING: 0.09" HIGH BLACK CHARACTERS
    - LABEL: METALIZED POLYESTER SHEET HILL P/N 127-0010.
  - DATECODE FORMAT SHALL BE (YYWK) EXAMPLE: 9912.



MATERIALS (DIMENSIONS IN PARENTHESES ARE IN INCHES)		APPROVALS	DATE	DRAWING TITLE HILL Engineering Division
FRONT SHEET	0.100 (0.004)	DESIGNED BY DG BARKER	8/15/01	
REAR SHEET	0.100 (0.004)	CHECKED BY JC HILL	8/21/01	
WELDING	0.100 (0.004)	MANUFACTURED BY JA WARD	8/21/01	SIZE B
FINISH	0.100 (0.004)	QC JC HILL	8/21/01	ONE CODE 02WL0
OTHER APPROVALS		CUSTOMER APPROVALS		DRAWING NO. 3414
APPLICATIONS	DO NOT SCALE DRAWING			REV B