


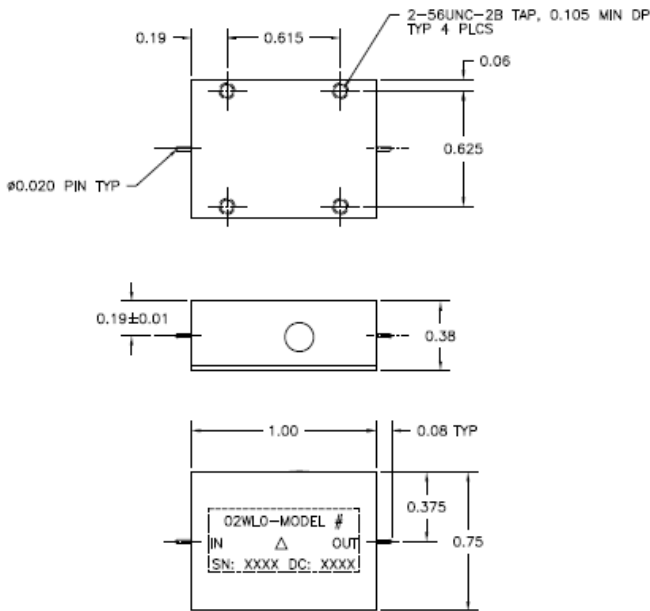
	Cage Code:	Title:	Date:	Rev:	Model no:
	02WLO	PRODUCT DATA (subject to change)	6/10/00	None	HL2-041

This document describes the performance of a high power limiter. This limiter is passive i.e.; no externally applied bias voltage or control signal is required. Limiters are not reciprocal devices. Please be sure that high power is applied at the input port only.

ITEM NO	CHARACTERISTIC	CONDITIONS	MIN	MAX	UNITS	COMMENTS
1	POWER SPECIFICATION	IN BAND				
1.1	FREQUENCY		2.8	3.7	GHz	
1.2	PEAK POWER			600	WATTS	
1.3	PULSE WIDTH			100	μS	
1.4	DUTY			10	%	
1.5	AVG. POWER			60	WATTS	
2	POWER SPECIFICATIONS	GUARD BAND				
2.1	FREQUENCY		3.8	4.2	GHz	
2.2	PEAK POWER			2	WATTS	
2.3	PULSE WIDTH			100	μS	
2.4	DUTY			10	%	
2.5	AVG. POWER			0.2	WATTS	
3	POWER SPECIFICATIONS	OUT OF BAND				
3.1	FREQUENCY			>4.2	GHz	
3.2	PEAK POWER			0.03	WATTS	
3.3	PULSE WIDTH			100	μS	
3.4	DUTY			10	%	
3.5	AVG. POWER			0.003	WATTS	
4	OPERATING FREQUENCY		2.8	3.7	GHz	
5	INSERTION LOSS					
5.1				0.8	dB	
6	FLAT LEAKAGE					
6.1				20	dBm	
7	SPIKE					
7.1	SPIKE			27	dBm	
7.2	SPIKE ENERGY			0.1	erg	
8	RECOVERY TIME					
8.1				400	nS	

	Cage Code:	Title:	Date:	Rev:	Model no:
	02WLO	PRODUCT DATA (subject to change)	6/10/00	None	HL2-041


ITEM NO	CHARACTERISTIC	CONDITIONS	MIN	MAX	UNITS	COMMENTS
9	VSWR					
9.1				1.5:1		
10	CONNECTORS					0.020" SOLDER PINS
11	MECHANICAL					
11.1	WEIGHT			1.5	Oz.	
11.2	OUTLINE					SEE DWG 3073 below
12	ENVIRONMENTAL					
12.1	OPERATING TEMPERATURE		-40	+85	°C	
12.2	STORAGE TEMPERATURE		-55	+85	°C	
12.3	VIBRATION LEVEL					GROUND TRANSPORT
12.4	ALTITUDE			10,000	Ft	
13	SCREENING					SCREEN PER QP-121 LEVEL 3



REVISIONS			
REV	DESCRIPTION	DATE	APPROVED
-	INITIAL RELEASE DRN #620	11/15/99	JCH
A	REVISED PER ECN #1480 (dgb)	3/21/00	JCH
B	REVISED PER ECN #1565 (dgb)	8/3/2000	JCH

- NOTES:
- FINISH:
 - GOLD PLATE PER HILL IP-212.
 - MARKING:
 - MARK PER MEI-147.
 - MARKING: 0.05" BLACK CHARACTERS.
 - LABEL: METALIZED POLYESTER SHEET P/N 127-0010.



UNLESS OTHERWISE SPECIFIED DIMENSIONS ARE IN INCHES TOLERANCES ARE:		APPROVALS DESIGNED BY: DG BARKER 11/15/99 CHECKED BY: JCH HILL 11/15/99 MANUFACTURING: JA WARD 11/15/99 QC: KL RINGDAHL 11/15/99 TELEGRAPH APPROVALS:			
FINISHES: 21/84 DECIMALS: 100 ANGLES: 30/30 SURFACE: 32 POKING ALL SURFS FROM PARTS	INTERNAL:	PERM:	DRAWING TITLE: OUTLINE LIMITER	SHEET: B DATE CODE: 02WLO DRAWING NO.: 3073	REV: B
NEXT ASSY	USED ON	APPLICATIONS	DO NOT SCALE DRAWING	SCALE: 2/1	PLANS: 3073B SHEET 1 OF 1