

	Cage Code:	Title:	Date:	Rev:	Model no:
	02WLO	<b>PRODUCT DATA</b> (subject to change)	6/10/00	None	<b>HL2-041</b>

**This document describes the performance of a high power limiter. This limiter is passive i.e.; no externally applied bias voltage or control signal is required. Limiters are not reciprocal devices. Please be sure that high power is applied at the input port only.**

ITEM NO	CHARACTERISTIC	CONDITIONS	MIN	MAX	UNITS	COMMENTS
1	POWER SPECIFICATION	IN BAND				
1.1	FREQUENCY		2.8	3.7	GHz	
1.2	PEAK POWER			600	WATTS	
1.3	PULSE WIDTH			100	μS	
1.4	DUTY			10	%	
1.5	AVG. POWER			60	WATTS	
2	POWER SPECIFICATIONS	GUARD BAND				
2.1	FREQUENCY		3.8	4.2	GHz	
2.2	PEAK POWER			2	WATTS	
2.3	PULSE WIDTH			100	μS	
2.4	DUTY			10	%	
2.5	AVG. POWER			0.2	WATTS	
3	POWER SPECIFICATIONS	OUT OF BAND				
3.1	FREQUENCY			>4.2	GHz	
3.2	PEAK POWER			0.03	WATTS	
3.3	PULSE WIDTH			100	μS	
3.4	DUTY			10	%	
3.5	AVG. POWER			0.003	WATTS	
4	OPERATING FREQUENCY		2.8	3.7	GHz	
5	INSERTION LOSS					
5.1				0.8	dB	
6	FLAT LEAKAGE					
6.1				20	dBm	
7	SPIKE					
7.1	SPIKE			27	dBm	
7.2	SPIKE ENERGY			0.1	erg	
8	RECOVERY TIME					
8.1				400	nS	



Cage Code: 02WLO

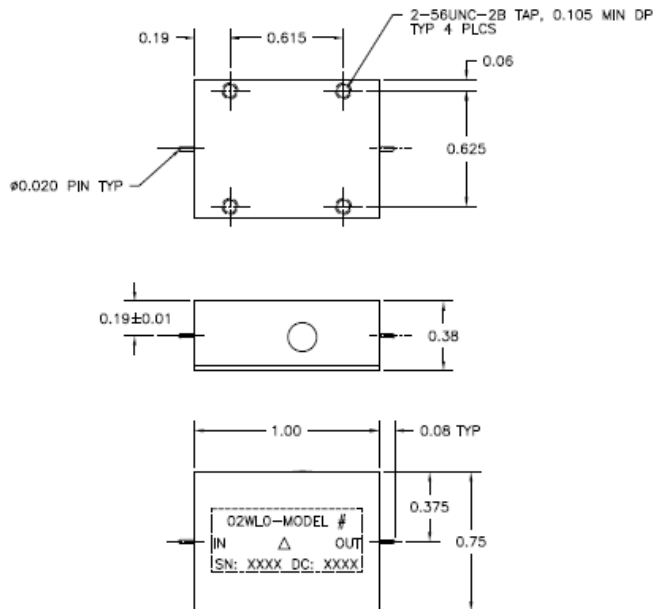
Title: **PRODUCT DATA**  
(subject to change)

Date: 6/10/00

Rev: None

Model no: HL2-041

ITEM NO	CHARACTERISTIC	CONDITIONS	MIN	MAX	UNITS	COMMENTS
9	VSWR					
9.1				1.5:1		
10	CONNECTORS					0.020" SOLDER PINS
11	MECHANICAL					
11.1	WEIGHT			1.5	Oz.	
11.2	OUTLINE					SEE DWG 3073 below
12	ENVIRONMENTAL					
12.1	OPERATING TEMPERATURE		-40	+85	°C	
12.2	STORAGE TEMPERATURE		-55	+85	°C	
12.3	VIBRATION LEVEL					GROUND TRANSPORT
12.4	ALTITUDE			10,000	Ft	
13	SCREENING					SCREEN PER QP-121 LEVEL 3



REVISIONS			
REV	DESCRIPTION	DATE	APPROVED
-	INITIAL RELEASE DRN #620	11/15/99	JCH
A	REVISED PER ECN #1480 (dgb)	3/21/00	JCH
B	REVISED PER ECN #1565 (dgb)	8/3/2000	JCH

NOTES:

- FINISH:
  - GOLD PLATE PER HILL IP-212.
- MARKING:
  - MARK PER MEI-147.
  - MARKING: 0.05" BLACK CHARACTERS.
- LABEL: METALIZED POLYESTER SHEET P/N 127-0010.



UNLESS OTHERWISE SPECIFIED TOLERANCES ARE TO BE USED UNLESS OTHERWISE INDICATED		APPROVALS		DATE	
FRONT	DECIMALS	ANGLES	SURFACE	11/15/99	
31/64	0.001	0.01	0.010	DESIGNED BY: J.C. HILL	DRAWING TITLE <b>OUTLINE LIMITER</b>
FURNISH ALL DIMS FROM PARTS				CHECKED BY: J.A. WARD	
INTERNAL	PERMITS			11/15/99	MANUFACTURING (JA. WARD) 11/15/99 DR: K.L. RINGDAHL TELETYPE APPROVALS
EXTERNAL	PERMITS			11/15/99	
NEXT ASSY	USED ON	SCALE	DATE CODE	DRAWING NO.	REV
APPLICATIONS	DO NOT SCALE DRAWING	2/1	02WLO	3073	B
				SCALE	SHEET
				2/1	1 OF 1