

	Cage Code:	Title:	Date:	Rev:	Model no:
	02WL0	PRODUCT DATA (Subject to change)	5/10/04	N/A	H25-004

This document describes the performance of a high power 1P2T switch. This is a cold switched item designed to switch cold; i.e; switching occurs only when RF is off. Proper bias levels per item no. 11 must be applied when operating this device.

ITEM NO	CHARACTERISTIC	CONDITIONS	MIN	MAX	UNITS	COMMENTS
1	POWER SPECIFICATION	IN BAND				
1.1	FREQUENCY		8	18	GHz	
1.2	PEAK POWER		--	2000	WATTS	
1.3	PULSE WIDTH		--	10	μS	
1.4	DUTY		--	4	%	
1.5	AVERAGE POWER		--	80	WATTS	
1.6	CW POWER		--	-	WATTS	
2	POWER SPECIFICATIONS	GUARD BAND				
2.1	FREQUENCY		18	19	GHz	
2.2	PEAK POWER		--	200	WATTS	
2.3	PULSE WIDTH		--	10	μS	
2.4	DUTY		--	4	%	
2.5	AVERAGE POWER		--	8	WATTS	
2.6	CW POWER		--	8	WATTS	
3	POWER SPECIFICATIONS	OUT OF BAND				
3.1	FREQUENCY			>19	GHz	
3.2	PEAK POWER		--	5	WATTS	
3.3	PULSE WIDTH		--	10	μS	
3.4	DUTY		--	4	%	
3.5	AVERAGE POWER		--	--	WATTS	
3.6	CW POWER		--	0.2	WATTS	
4	OPERATING FREQUENCY		8.0	18.0	GHz	
5	INSERTION LOSS					
		8.0 to 12.0 GHz		1.3	dB	
		12.0-18.0 GHz		1.6	dB	
6	ISOLATION					
6.1	ISOLATION	INPUT TO OUTPUT	45	--	dB	
7	PHASE					
7.1	MATCHING					NOT SPECIFIED
7.2	PHASE TRACKING					NOT SPECIFIED
8	VSWR					
8.1	INPUT	SELECTED PORTS	--	1.6:1	--	

	Cage Code:	Title:	Date:	Rev:	Model no:
	02WLO	PRODUCT DATA (Subject to change)	5/10/04	N/A	H25-004

ITEM NO	CHARACTERISTIC	CONDITIONS	MIN	MAX	UNITS	COMMENTS
8.2	OUTPUT	SELECTED PORTS	--	1.6:1	--	
8.3	PORT NOT SELECTED		--	∞	--	infinity
8.4	TERMINATION		--	2.5:1	--	
8.5	SOURCE		--	1.2:1	--	
9	HARMONICS & SPURS					
9.1	INTERNALLY GENERATED					NOT SPECIFIED
10	SWITCHING					
10.1	SPEED	TO 0.50DB	--	1.0	μS	
10.2	SWITCHING RATE		--	75	KHz	
10.3	COMMAND LOGIC	RS-422				
10.4	LOGIC TABLE					SEE OUTLINE DWG 3826
10.5	POSITION SENSE					NOT AVAILABLE
10.6	VIDEO LEAKAGE					NOT SPECIFIED
11	D.C. POWER					
11.1	POSITIVE BIAS VOLTAGE		4.8	5.2	VDC	
11.2	NEGATIVE BIAS VOLTAGE		-66	-72	VDC	
11.3	POSTIVE BIAS CURRENT			300	mA	
11.4	NEGATIVE BIAS CURRENT			20	mA	
12	CONNECTORS					
12.1	RF					SMA(F)
12.2	DC					SOLDER PINS
13	MECHANICAL					
13.1	WEIGHT		--	4	OZ	
13.2	OUTLINE					SEE DWG 3826
14	ENVIRONMENTAL					
14.1	OPERATING TEMPERATURE		-20	+60	°C	
14.2	STORAGE TEMPERATURE		-55	+85	°C	
14.3	VIBRATION LEVEL					SHELTERED GND MOBILE
14.4	DEVICE SCREENING	LEVEL 2				QP-121



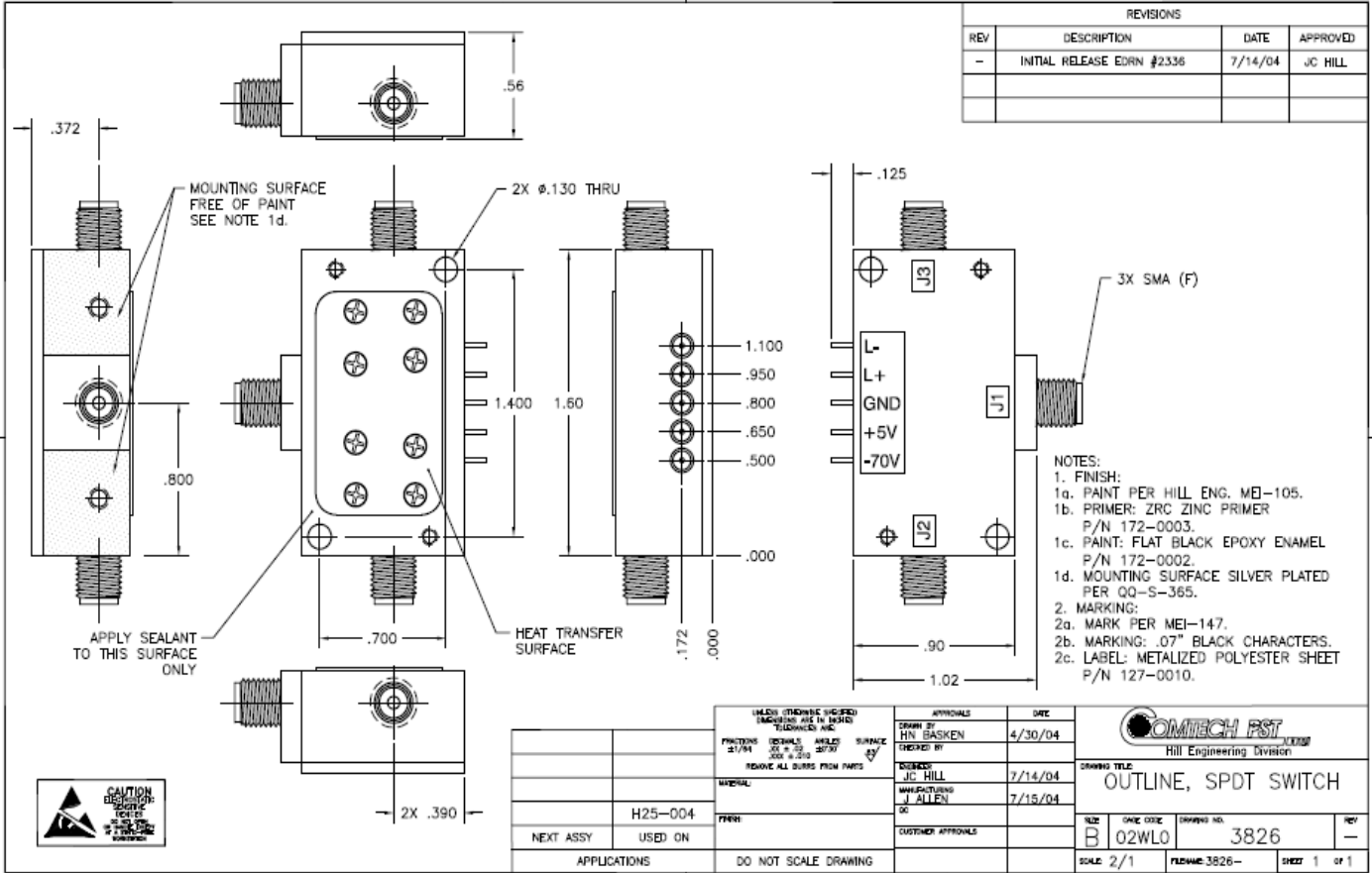
Cage Code: 02WL0

Title: **PRODUCT DATA**
(Subject to change)

Date: 5/10/04

Rev: N/A

Model no: **H25-004**



REVISIONS			
REV	DESCRIPTION	DATE	APPROVED
-	INITIAL RELEASE ED RN #2336	7/14/04	JC HILL

- NOTES:
- FINISH:
 - PAINT PER HILL ENG. MEI-105.
 - PRIMER: ZRC ZINC PRIMER P/N 172-0003.
 - PAINT: FLAT BLACK EPOXY ENAMEL P/N 172-0002.
 - MOUNTING SURFACE SILVER PLATED PER QQ-S-365.
 - MARKING:
 - MARK PER MEI-147.
 - MARKING: .07" BLACK CHARACTERS.
 - LABEL: METALIZED POLYESTER SHEET P/N 127-0010.



UNLESS OTHERWISE SPECIFIED DIMENSIONS ARE IN INCHES TOLERANCES ARE:		APPROVALS DRAWN BY: HN BASKEN CHECKED BY: JC HILL DATE: 4/30/04	
FINISHES: 21/74 DIMENSIONS: 20 & 25 SURFACE: 2079 REMOVE ALL BURRS FROM PARTS	DESIGNED BY: JC HILL MANUFACTURED BY: J ALLEN DATE: 7/15/04	DRAWING TITLE: OUTLINE, SPDT SWITCH	
MATERIAL: PART: H25-004	CUSTOMER APPROVALS:	SIZE: B QTY: 02WL0 DRAWING NO.: 3826	REV: -
NEXT ASSY: USED ON: APPLICATIONS:	DO NOT SCALE DRAWING	SCALE: 2/1 FILENAME: 3826-	SHEET: 1 OF 1