

	Cage Code:	Title:	Date:	Rev:	Model no:
	02WL0	<b>PRODUCT DATA</b> <b>(subject to change)</b>	11/23/2009	None	<b>H61-017</b>

**This document describes the performance of a high power 1P6T switch. This is a cold switched design i.e.; switched while RF is off. Proper bias levels must be applied when operating this device.**

ITEM NO	CHARACTERISTIC	CONDITIONS	MIN	MAX	UNITS	COMMENTS
1	POWER SPECIFICATION	IN BAND				
1.1	FREQUENCY		0.4	1.7	GHz	
1.2	PEAK POWER			600	WATTS	
1.3	PULSE WIDTH		1	100	µs	
1.4	DUTY			6	%	
1.5	AVG POWER			36	WATTS	
2	POWER SPECIFICATIONS	GUARD BAND				
2.1	FREQUENCY		1.7	1.9	GHz	
2.2	PEAK POWER			1	WATTS	
2.3	PULSE WIDTH			CW	µs	
2.4	DUTY			CW	%	
2.5	CW POWER			1	WATTS	
2.6	AVERAGE POWER			N/A	WATTS	
3	POWER SPECIFICATIONS	OUT OF BAND				
3.1	FREQUENCY		>1.9		GHz	
3.2	PEAK POWER			0.01	WATTS	
3.3	PULSE WIDTH			1	µs	
3.4	DUTY			0.01	%	
3.5	CW POWER			0.001	WATTS	
3.6	AVERAGE POWER			0.001	WATTS	
4	OPERATING FREQUENCY		0.4	1.7	GHz	
5	INSERTION LOSS			2.0	dB	
6	ISOLATION					
6.1	INPUT TO OUTPUT		20		dB	
6.2	OUTPUT TO OUTPUT		20		dB	
7	PHASE					
7.1	MATCHING					NOT SPECIFIED
7.2	TRACKING					NOT SPECIFIED



Cage Code: 02WL0

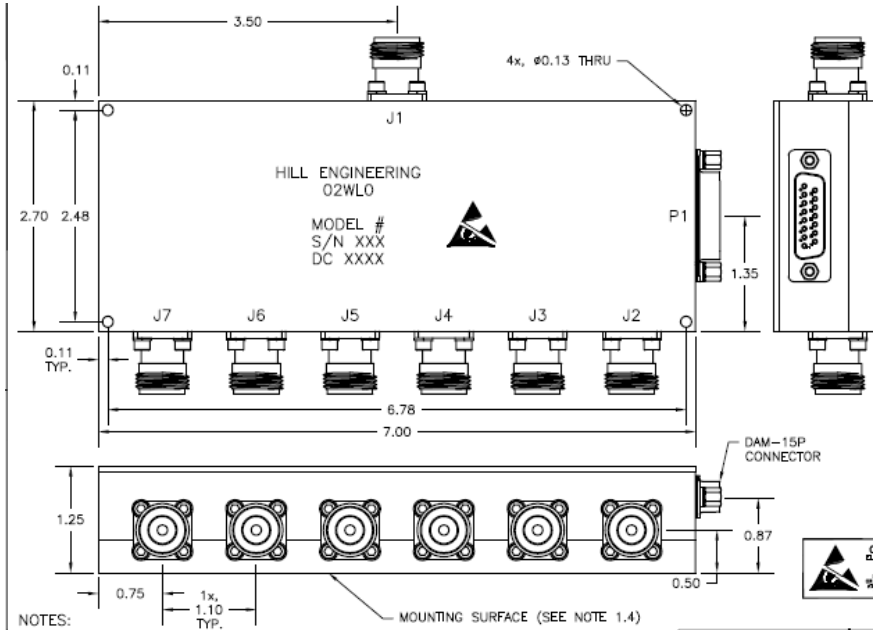
Title: **PRODUCT DATA**  
**(subject to change)**

Date: 11/23/2009

Rev: None

Model no: **H61-017**

ITEM NO	CHARACTERISTIC	CONDITIONS	MIN	MAX	UNITS	COMMENTS
8	VSWR			1.8:1		
8.1	PORTS NOT SELECTED					INFINITY (Reflective)
8.2	INPUT & OUTPUT, SELECTED PORTS			1.8:1		
8.3	TERMINATION			2.5:1		
8.4	SOURCE			1.2:1		
9	HARMONICS & SPURS					
9.1	INTERNALLY GENERATED					NOT SPECIFIED
9.2		MEASURED AT INCIDENT POWER				NOT SPECIFIED
10	SWITCHING					
10.1	SPEED	50% LOGIC TO 0.5 dB OF RF		4	uS	
10.2	SWITCHING RATE			10	kHz	
10.3	COMMAND LOGIC	TTL				
10.4	LOGIC TABLE					SEE DWG 4042 below
11	D.C. POWER					
11.1	POSITIVE BIAS VOLTAGE		4.8	5.2	VDC	
11.2	NEGATIVE BIAS VOLTAGE		-95	-105	VDC	
11.3	POSITIVE BIAS CURRENT			300	mA	
11.4	NEGATIVE BIAS CURRENT			60	mA	
12	CONNECTORS					
12.1	RF					Type NF
12.3	DC					Multi-pin D Type
13	MECHANICAL					
13.1	WEIGHT			17	Oz.	
13.2	OUTLINE					SEE DWG 4042 below
14	ENVIRONMENTAL					
14.1	OPERATING TEMPERATURE		-40	+49	°C	
14.2	STORAGE TEMPERATURE		-40	+71	°C	
14.3	VIBRATION LEVEL					Ground
15.0	Finish/Marking					Specify



REVISIONS			
REV	DESCRIPTION	DATE	APPROVED
-	INITIAL RELEASE EDRN 2776	06/26/05	SPL
A	REVISED PER ECN 3614	09/16/05	SPL
B	REVISED PER ECN 3622	10/04/05	SPL
C	REVISED PER ECN 3687	1/23/06	SPL

SPECIFICATIONS SUBJECT TO CHANGE WITHOUT NOTICE

P1 PIN OUT LIST			
PIN	FUNCTION	PIN	FUNCTION
1	+5V DC	9	GND
2	-100V DC	10	N/C
3	N/C	11	+5V DC
4	LOGIC 1 (MSB)	12	N/C
5	LOGIC 2	13	LOGIC 3 (LSB)
6	GND	14	N/C
7	N/C	15	GND
8	N/C		

TRUTH TABLE			
PIN 4	PIN 5	PIN 13	SELECTED PORT
0	0	0	J2
0	0	1	J3
0	1	0	J4
0	1	1	J5
1	0	0	J6
1	0	1	J7
1	1	0	ALL OFF
1	1	1	ALL OFF

- NOTES:
- FINISH:
    - PAINT PER HILL ENG. MEI-105.
    - PRIMER: ZRC SINC PRIMER HILL P/N 172-0003.
    - PAINT: FLAT BLACK EPOXY ENAMEL HILL P/N 172-0002.
    - MOUNTING SURFACE: CHEMICAL FILM.
  - MARKINGS:
    - MARK PER MEI-147.
    - MARKING: 0.125" BLACK CHARACTERS.
    - LABEL: METALIZED POLYESTER SHEET HILL P/N 127-0010.

UNLESS OTHERWISE SPECIFIED DIMENSIONS ARE IN INCHES TOLERANCES ARE:		APPROVALS CHECKED BY: HN. BASKEN DATE: 06/26/05		
FINISH: 24/24 20 ± 0.010 20 ± 0.010 REMOVE ALL BURRS FROM PARTS	SURFACE:	DESIGNED BY: SP. LEROUX DATE: 06/26/05	DRAWING TITLE: OUTLINE, SP6T SWITCH	
MATERIAL: H61-017		MANUFACTURED BY: J. ALLEN DATE: 06/26/05		SIZE: B QTY: 02WL0 DRAWING NO.: 4042 SCALE: FULL FORM: 4042c SHEET: 1 OF 1
NEXT ASSY: USED ON		CUSTOMER APPROVALS:		
APPLICATIONS:		DO NOT SCALE DRAWING		