

	Cage Code:	Title:	Date:	Rev:	Model no:
	02WLO	<b>PRODUCT DATA</b> <b>(Subject to change)</b>	2/6/2002	N/A	<b>L25-003</b>

**This document describes the performance of a high power 1P2T switch. This is a cold switched design i.e.; switched while RF is off. Proper bias levels must be applied when operating this device.**

ITEM NO	CHARACTERISTIC	CONDITIONS	MIN	MAX	UNITS	COMMENTS
1	POWER SPECIFICATION	IN BAND				
1.1	FREQUENCY		14.7	15.0	GHz	
1.2	PEAK POWER			10	WATTS	
1.3	PULSE WIDTH			CW	μS	
1.4	DUTY			CW	%	
1.5	CW POWER			10	WATTS	
1.6	AVERAGE POWER			N/A	WATTS	
2	POWER SPECIFICATIONS	GUARD BAND				
2.1	FREQUENCY		15	16	GHz	
2.2	PEAK POWER			1	WATTS	
2.3	PULSE WIDTH			CW	μS	
2.4	DUTY			CW	%	
2.5	CW POWER			1	WATTS	
2.6	AVERAGE POWER			N/A	WATTS	
3	POWER SPECIFICATIONS	OUT OF BAND				
3.1	FREQUENCY		>16		GHz	
3.2	PEAK POWER			0.01	WATTS	
3.3	PULSE WIDTH			1	μS	
3.4	DUTY			0.01	%	
3.5	CW POWER			0.001	WATTS	
3.6	AVERAGE POWER			0.001	WATTS	
4	OPERATING FREQUENCY		14.8	14.9	GHz	
5	INSERTION LOSS			2.5	dB	
6	ISOLATION					
6.1	INPUT TO OUTPUT		35		dB	
6.2	OUTPUT TO OUTPUT		35		dB	
7	PHASE					
7.1	MATCHING					NOT SPECIFIED
7.2	TRACKING					NOT SPECIFIED



Cage Code: 02WLO

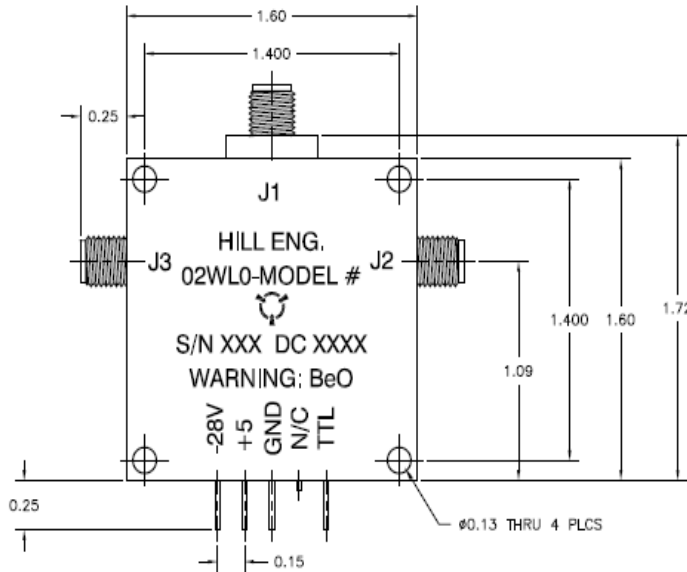
Title: **PRODUCT DATA**  
**(Subject to change)**

Date: 2/6/2002

Rev: N/A

Model no: L25-003

ITEM NO	CHARACTERISTIC	CONDITIONS	MIN	MAX	UNITS	COMMENTS
8	VSWR			1.8:1		
8.1	PORTS NOT SELECTED					INFINITY
8.2	INPUT & OUTPUT, SELECTED PORTS			1.8:1		
8.3	TERMINATION			2.5:1		
8.4	SOURCE			1.5:1		
9	HARMONICS & SPURS					
9.1	INTERNALLY GENERATED					NOT SPECIFIED
9.2		MEASURED AT INCIDENT POWER				NOT SPECIFIED
10	SWITCHING					
10.1	SPEED	50% LOGIC TO 0.5 dB OF RF		500	nS	
10.2	SWITCHING RATE			50	kHz	
10.3	COMMAND LOGIC	TTL				
10.4	LOGIC TABLE					SEE DWG 3502
11	D.C. POWER					
11.1	POSITIVE BIAS VOLTAGE		4.8	5.2	VDC	
11.2	NEGATIVE BIAS VOLTAGE		-26	-30	VDC	
11.4	POSITIVE BIAS CURRENT			300	mA	
11.5	NEGATIVE BIAS CURRENT			60	mA	
NOTE: NO OVER-VOLTAGE OR REVERSE POLARITY PROTECTION IS PROVIDED WITH THIS SWITCH.						
12	CONNECTORS					
12.1	RF					SMAF
12.3	DC					SOLDER PINS
13	MECHANICAL					
13.1	WEIGHT			5.5	Oz.	
13.2	OUTLINE					SEE DWG 3502
14	ENVIRONMENTAL					
14.1	OPERATING TEMPERATURE		-20	+60	°C	
14.2	STORAGE TEMPERATURE		-20	+60	°C	
14.3	VIBRATION LEVEL					GROUND TRANSPORT

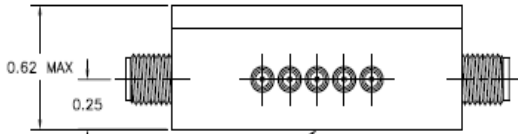


REVISIONS			
REV	DESCRIPTION	DATE	APPROVED
-	INITIAL RELEASE PER EDNR #1588	4/25/02	SPL
A	REVISED PER EDN #2820 (dtb)	9/20/04	SPL

- NOTES:
- FINISH
    - PAINT PER PROCEDURE MEI-105.
    - PRIMER: ZRC ZINC PRIMER HILL P/N 172-0003
    - PAINT: FLAT BLACK EPOXY ENAMEL HILL P/N 172-0002
  - MARKING
    - MARK PER PROCEDURE MEI-147.
    - MARKING: 0.09" HIGH BLACK CHARACTERS
    - LABEL: TEMPORARY, REMOVABLE.
  - DATECODE FORMAT SHALL BE (YYWK) EXAMPLE: 0220.

LOGIC TABLE

OUTPUT	TTL
J1-J2	0
J1-J3	1



MOUNTING SURFACE  
FREE OF PAINT



HILL ENGINEERING DIVISION HILL P/N 172-0003 DATE: 2/6/02 CHECKED BY: HN BJSKETH DATE: 4/25/02 DESIGNED BY: SP LENOUX DATE: 4/25/02 MANUFACTURED BY: JA ALLEN DATE: 5/1/02 DRAWN BY: JC HILL DATE: 5/3/02 CUSTOMER APPROVALS:			
NEXT ASSY: USED ON: APPLICATIONS: DO NOT SCALE DRAWING		DRAWING TITLE: <b>OUTLINE, 1P2T TTL LOGIC</b> SIZE: B QTY: 02WLO DRAWING NO.: 3502 REV: A	
SCALE: 2/1 FILENAME: 3502a SHEET: 1 of 1			